

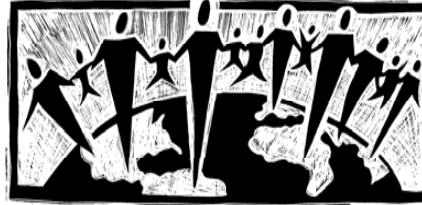
**Integrating community support one child
at a time:
Wraparound Oregon Year One Evaluation Findings**

**CHARPP--Real Data in Real Time:
Sharing Best Practices in Mental Health
Services to Children and Their Families**

**Portland, Oregon
September 11, 2007**

**Janet Walker, Nan Waller, Andrew Grover,
Alice Galloway, Janice Gratton**

Wraparound Oregon: Logic Model: System/Collaborative Level (overview)



If these partners:

- Child- and family-serving agencies
- Community organizations
- Business and philanthropy
- Local government
- Interested individuals



Can commit to the following propositions as the basis for their work together:

- The whole community “owns” its children/youth.
- Families & youth must be involved in decision-making.
- Sustained change requires changes in policy, funding, and procedures across all levels of the system.
- Each Partner must work collaboratively and flexibly to improve outcomes for children and families.



Then, collaboratively, they can develop a system of care with these main strands of activity:

- Implementing high-fidelity wraparound
- Providing services and supports that are consistent with system of care principles
- Providing system of care coaching and training
- Stimulating change at the policy and funding level that serves to support and sustain system of care
- Soliciting and efficiently managing funds and other resources to support these activities



Which will result in these short-term outcomes by January 2006:

- Compliance with funding requirements
- CMT meets regularly
- Interagency agreements signed
- Governance plan instituted
- Assessment of funding and access barriers
- Wraparound practice model defined
- Social marketing plan prepared
- MIS/evaluation plan developed
- Training plan implemented
- Process to manage disagreements created



And these mid-term outcomes by January 2007:

- Community awareness
- Children & families enrolled in high-fidelity wraparound
- Youth & families are engaged, participating, & satisfied
- Services/supports developed to meet needs
- Partnership monitors fidelity, costs, & outcomes
- Stakeholder support for Wraparound Oregon is increased
- Funding and access barriers addressed
- Plan for sustainability articulated



And these long-term outcomes:

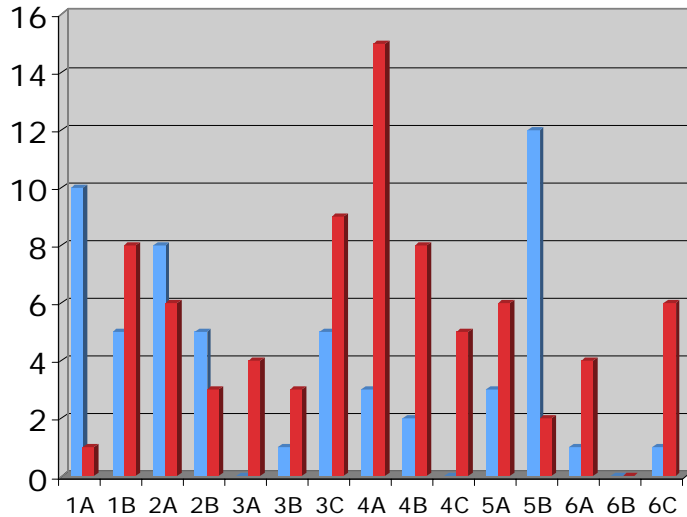
For children and families (e.g.)

- Child/youth has improved functioning
- Child/youth & family have increased connection to the community
- Child/youth is living permanently and safely in lease restrictive setting

For the community

- System of care is maintained and expanded
- Information about costs and benefits of Wraparound Oregon available
- Partnership has increased capacity to work with community stakeholders and achieve community integration outcomes
- Partnership impacts building of systems of care across the state

Wraparound Oregon: System Development Feedback November 2006



■ Successes
■ Priorities

1	Community Partnership	
1A	Formalized decision making structure	
1B	Appropriate participation in the partnership	
2	Collaborative Activity	
2A	Plan to turn vision into reality	
2B	Joint action steps taken	
3	Fiscal Tracking and Policies	
3A	Access to information about costs	
3B	Shared fiscal responsibility	
3C	Sufficient, flexible funding	
4	Access to Supports and Services	
4A	Ready access to supports and services	
4B	Developing new supports and services	
4C	Adequate crisis response	
5	Human Resource Development and Support	
5A	Appropriate case loads	
5B	Adequate training, coaching, and supervision	
6	Accountability	
6A	Outcome data	
6B	Wraparound quality data	
6C	Identifying and addressing grievances and barriers	

Wraparound Oregon: Logic Model: Service Level



Target Population

- Children/youth ages 6-17
- Medicaid eligible,
- Score of 4, 5, or 6 on CASII
- In or at risk of being in psychiatric residential or day treatment, or detention
- Involved in 3 systems
- Has diagnosis and disability that has lasted at least one year



Philosophy and values

- Family and community are best place for child/youth to live
- All children/youth can live at home with appropriate supports
- All families can participate in their child's life regardless of disability or situation.
- Youth/family are best experts on needs and preferences.
- Youth/family preferences are prioritized in decision making.
- Youth/family must be given a choice of services & providers
- Youth/family must have access to effective interventions
- Services/supports should be culturally competent and strengths based



Service Delivery: Wraparound

- Individualized, comprehensive, team-based planning
 - + Implemented for each child/family by care coordinator/family advocate pair
 - + Single plan incorporates IEP and guides and coordinates all systems' work with families
- Practice model is clearly defined, and training and ongoing coaching ensures high fidelity practice that reflects wraparound principles, e.g.:
 - + meeting needs as defined by family and team and as measured by indicators chosen by the family and team
 - + maximizing family and youth perspective, participation, and choice
 - + using a strengths-based, asset-building orientation
 - + promoting community integration (e.g. through using community-based services, enhancing family and youth connections to community, and building on community and informal assets and supports)



Intermediate outcomes

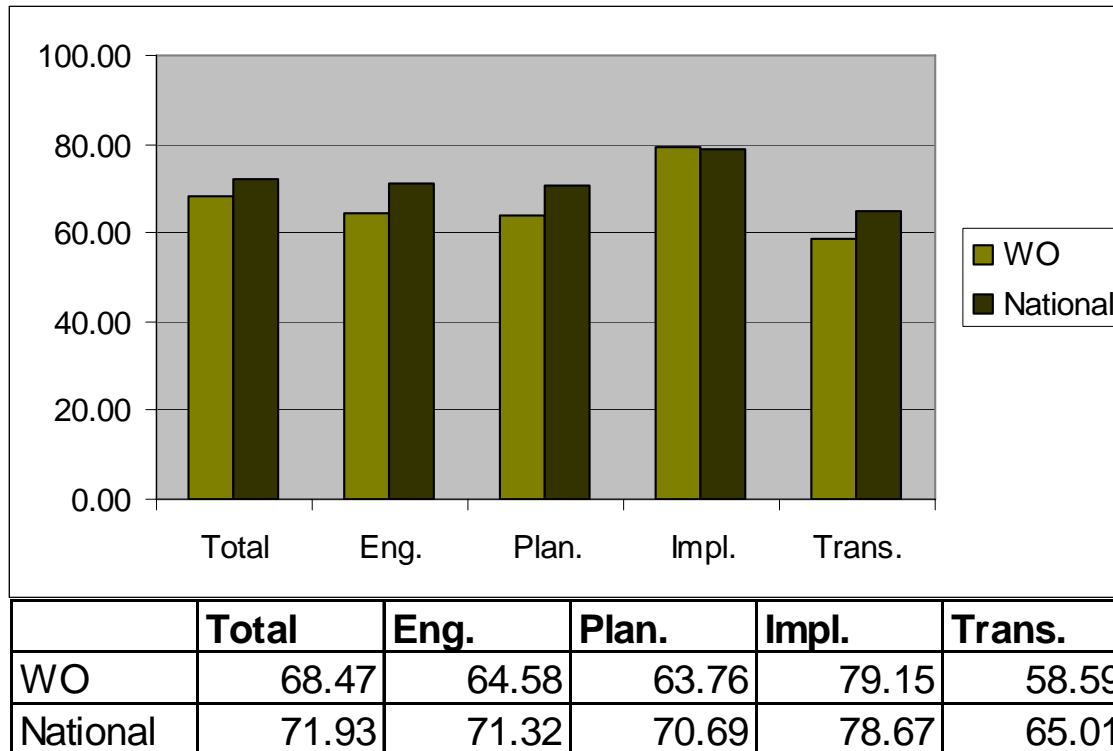
- High quality/
high fidelity
wraparound
- Youth & families are involved, engaged, and satisfied
- Youth & families perceive that care is coordinated
- Each child/youth and his or her family has a single, individualized plan that coordinates services and supports
- Services & supports identified in plan are provided



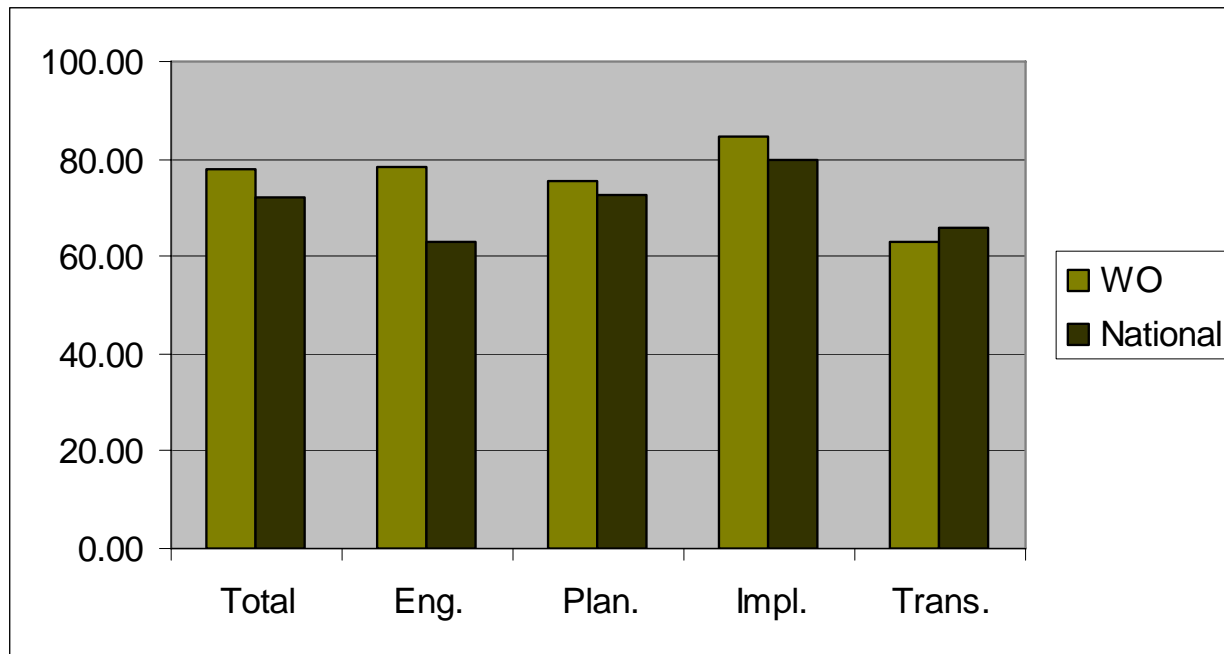
Long-term outcomes

- Improved child/youth functioning
 - + increased developmental assets
 - + improved mental health outcomes
 - + improved educational outcomes
 - + reduced involvement with juvenile justice
- Youth and family build and/or maintain connections to family/extended family and community
- Youth and family's needs met, team goals/mission achieved, QoL increases
- Families and youth transition out of intensive services feeling empowered, hopeful, and capable of drawing on internal and community capacities and resources
- Youth living safely and permanently in least restrictive/ community settings.

WFI: Caregiver Wraparound OR/National Comparison



WFI: Youth Wraparound OR/National Comparison

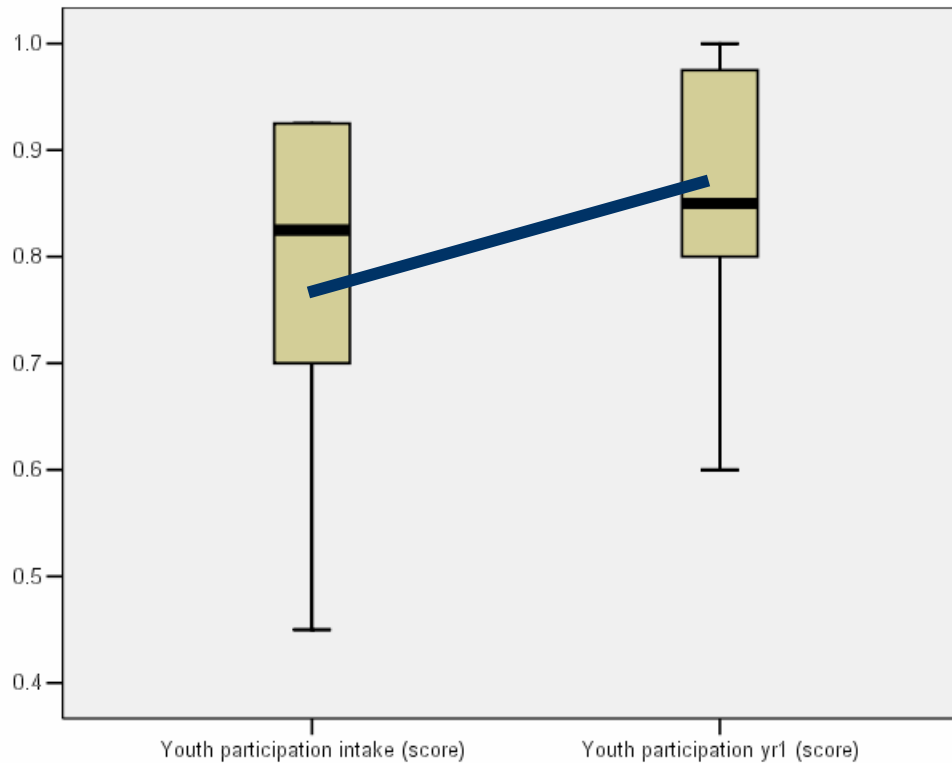


	Total	Eng.	Plan.	Impl.	Trans.
WO	77.69	78.33	75.45	84.48	62.75
National	72.11	62.94	72.77	79.86	65.94

Youth Self-Report Data

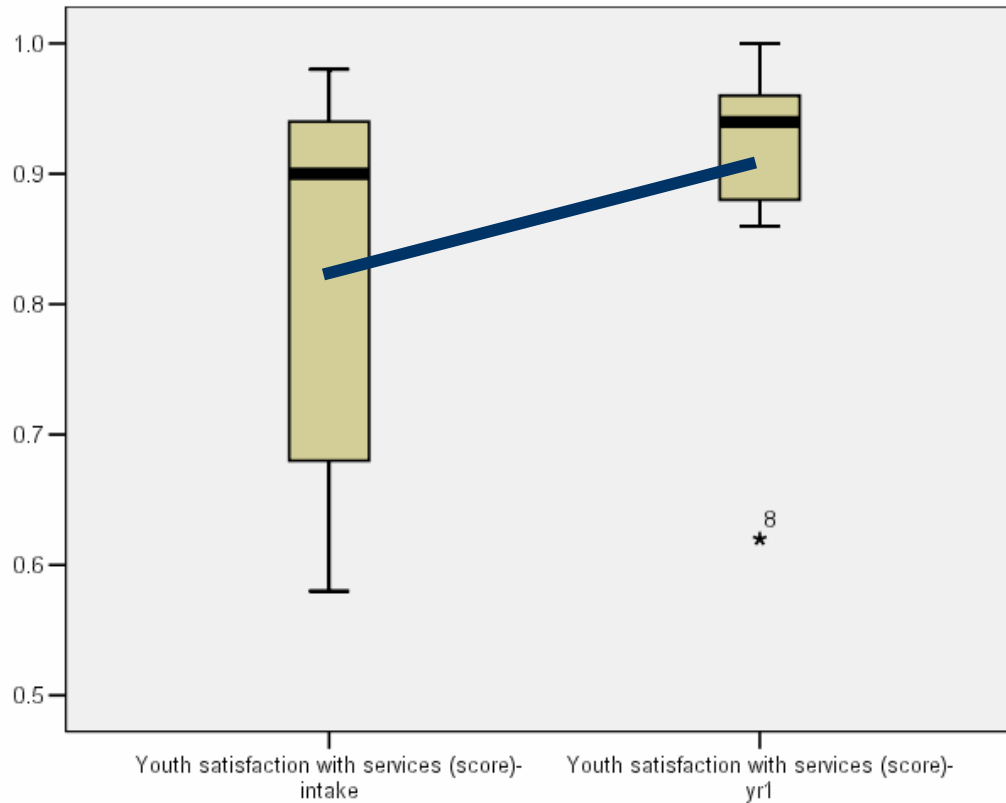
- ◆ Compares same youth at intake and after 1 year in Wraparound Oregon (or at exit if youth leaves before 1 year)
- ◆ Not a full sample— several youth declined and others don't return calls
- ◆ Difficult to resolve questions about the status of different youth (hiatus/discharged/never engaged)

Youth Participation in Planning: Intake to Year 1



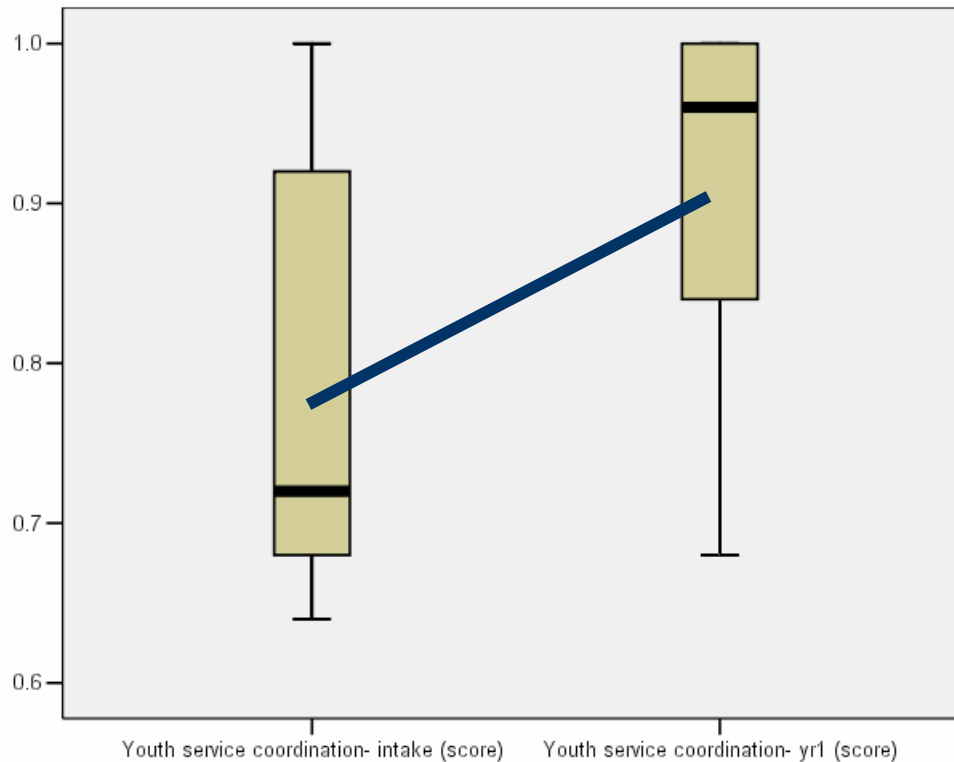
From the YPP: Intake mean: .76 Year 1 mean: .85

Youth Satisfaction w/Services: Intake to Year 1



From the YSS: Intake mean: .82 Year 1 mean: .90

Service Coordination Scale (youth): Intake to Year 1



Intake mean: .78 Year 1 mean: .89

Wraparound Oregon: Logic Model: Service Level



Target Population

- Children/youth ages 6-17
- Medicaid eligible,
- Score of 4, 5, or 6 on CASII
- In or at risk of being in psychiatric residential or day treatment, or detention
- Involved in 3 systems
- Has diagnosis and disability that has lasted at least one year



Philosophy and values

- Family and community are best place for child/youth to live
- All children/youth can live at home with appropriate supports
- All families can participate in their child's life regardless of disability or situation.
- Youth/family are best experts on needs and preferences.
- Youth/family preferences are prioritized in decision making.
- Youth/family must be given a choice of services & providers
- Youth/family must have access to effective interventions
- Services/supports should be culturally competent and strengths based



Service Delivery: Wraparound

- Individualized, comprehensive, team-based planning
 - + Implemented for each child/family by care coordinator/family advocate pair
 - + Single plan incorporates IEP and guides and coordinates all systems' work with families
- Practice model is clearly defined, and training and ongoing coaching ensures high fidelity practice that reflects wraparound principles, e.g.:
 - + meeting needs as defined by family and team and as measured by indicators chosen by the family and team
 - + maximizing family and youth perspective, participation, and choice
 - + using a strengths-based, asset-building orientation
 - + promoting community integration (e.g. through using community-based services, enhancing family and youth connections to community, and building on community and informal assets and supports)



Intermediate outcomes

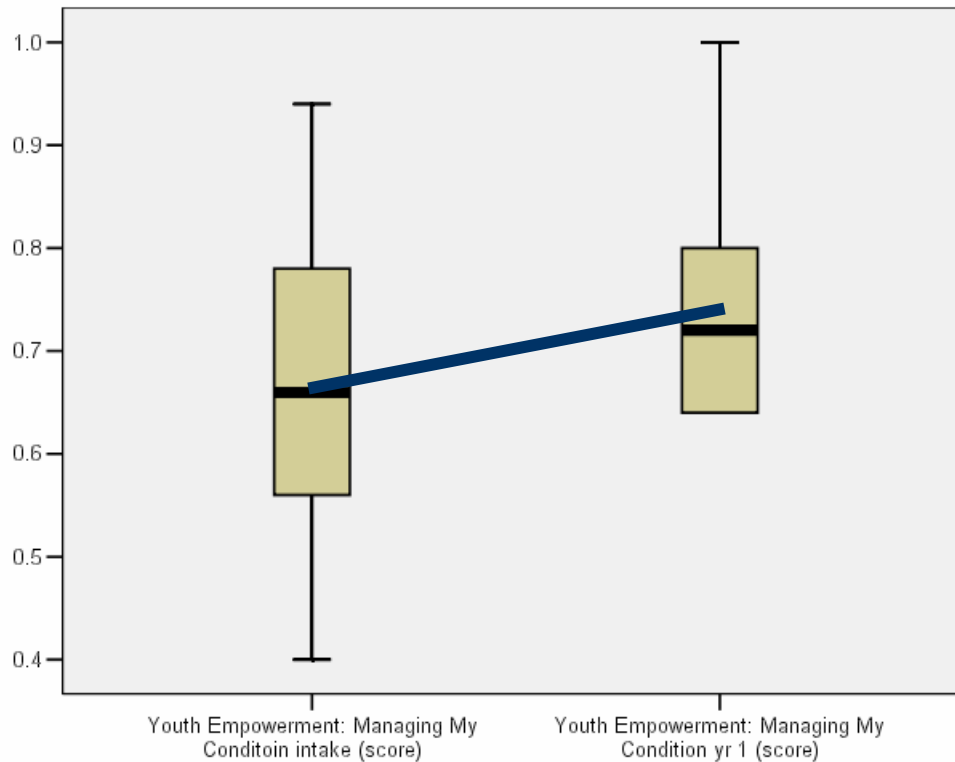
- High quality/ high fidelity wraparound
- Youth & families are involved, engaged, and satisfied
- Youth & families perceive that care is coordinated
- Each child/ youth and his or her family has a single, individualized plan that coordinates services and supports
- Services & supports identified in plan are provided



Long-term outcomes

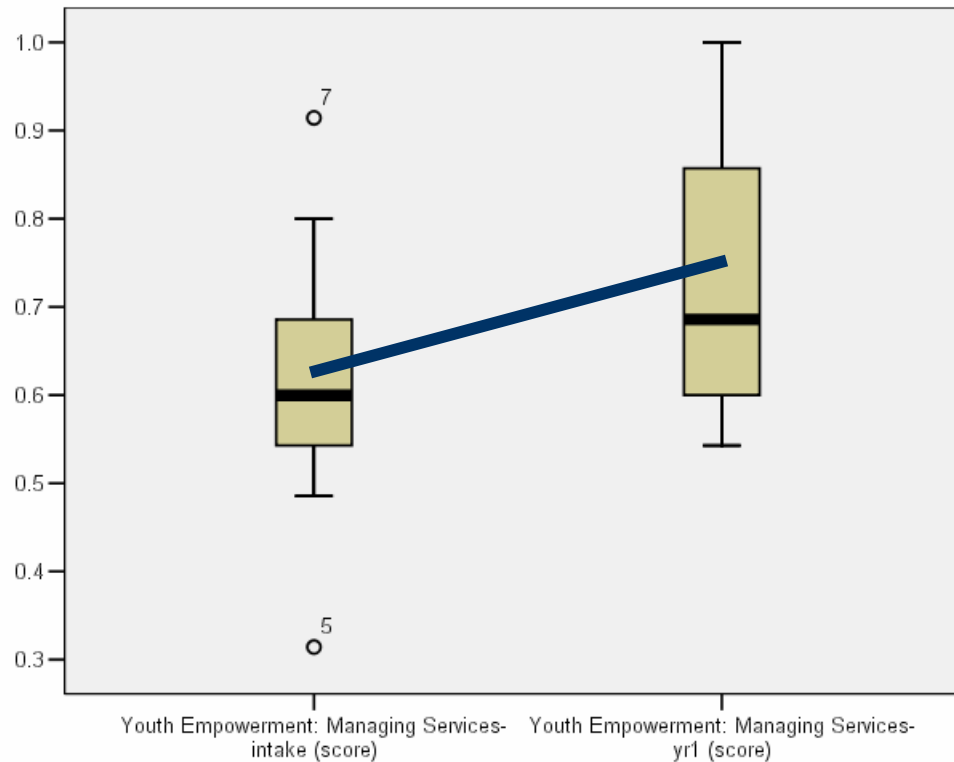
- Improved child/youth functioning
 - + increased developmental assets
 - + improved mental health outcomes
 - + improved educational outcomes
 - + reduced involvement with juvenile justice
- Youth and family build and/or maintain connections to family/extended family and community
- Youth and family's needs met, team goals/mission achieved, QoL increases
- Families and youth transition out of intensive services feeling empowered, hopeful, and capable of drawing on internal and community capacities and resources
- Youth living safely and permanently in least restrictive/ community settings.

Youth Empowerment- Managing My Condition



Youth Empowerment, Self Subscale:
Intake mean: .67 Year 1 mean: .76

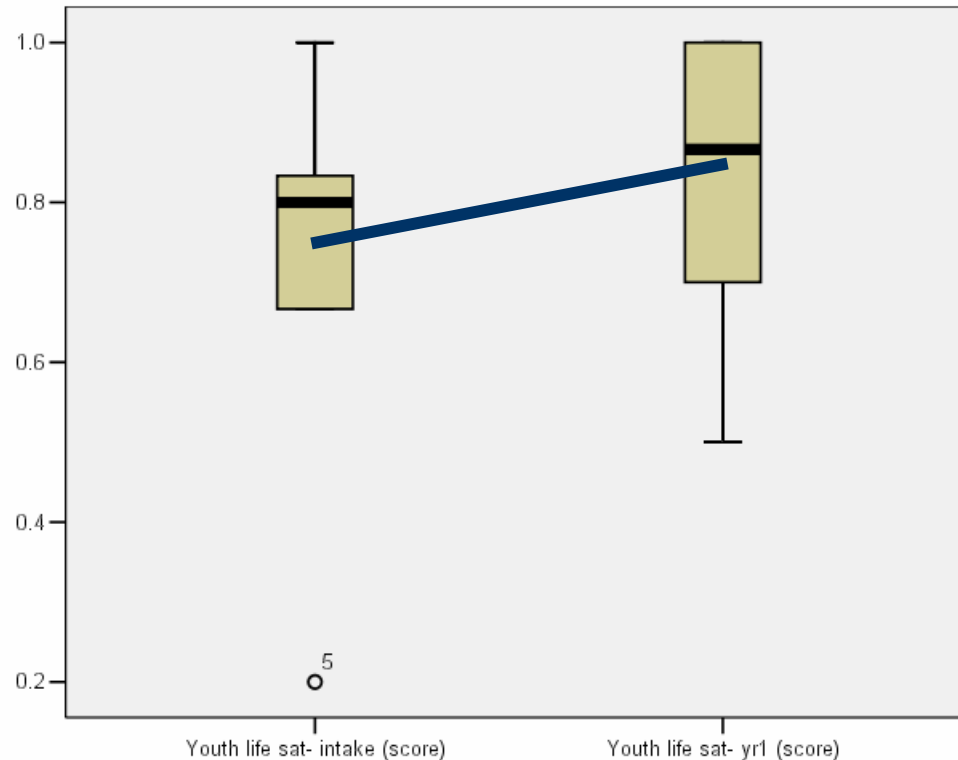
Youth Empowerment- Managing Services



Youth Empowerment, Services Subscale:
Intake mean: .62 Year 1 mean: .74

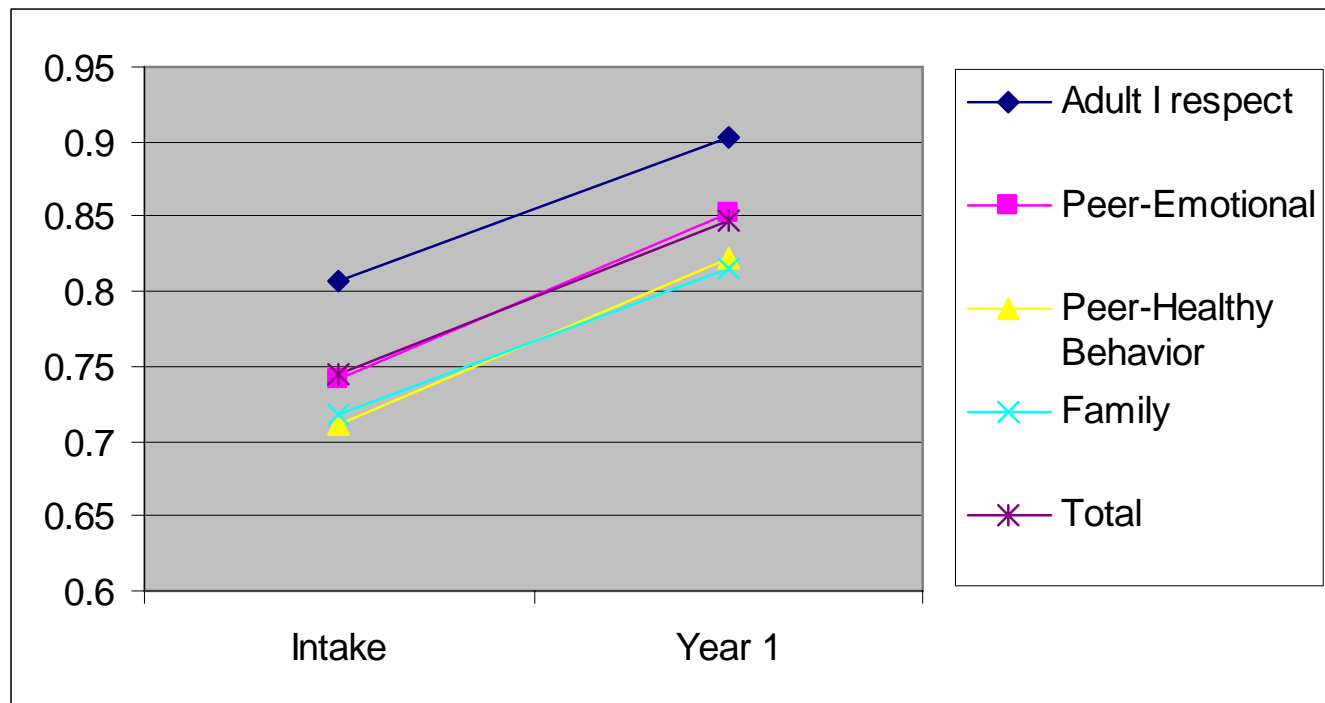
Youth Life Satisfaction

Intake to Year 1



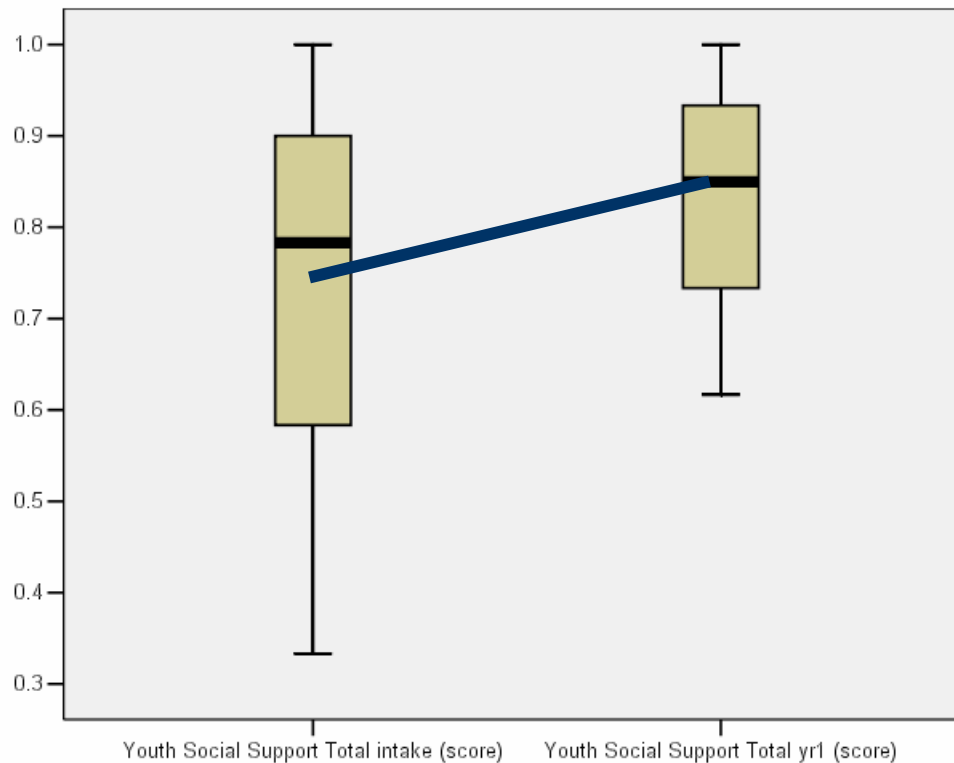
From the YSS: Intake mean: .73 Year 1 mean: .83

Youth Social Support: Subscales



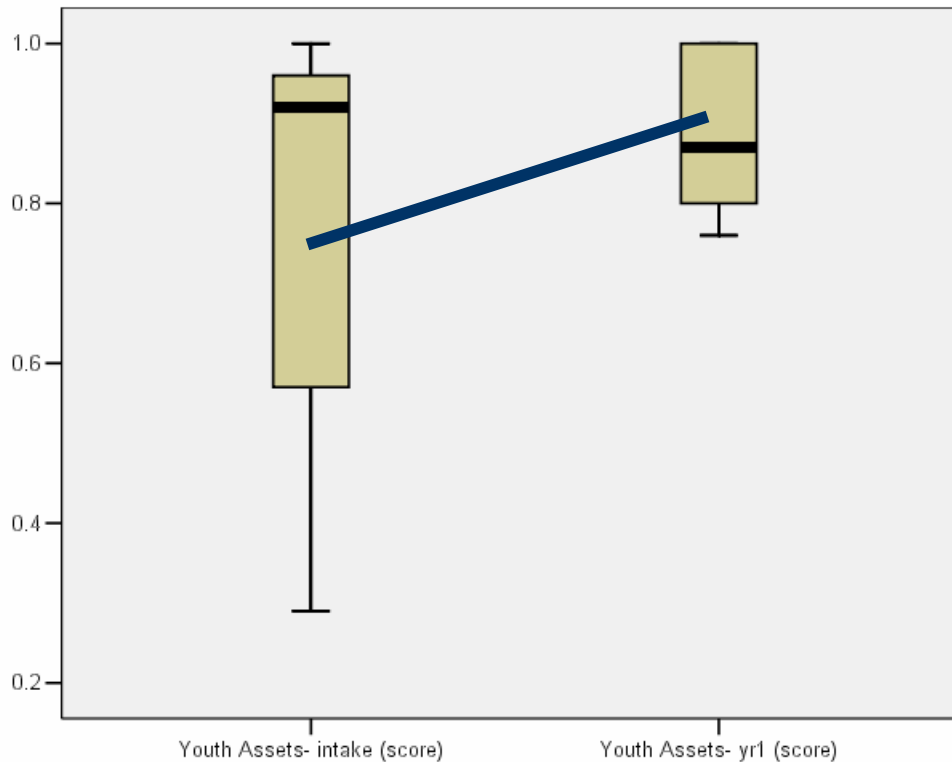
Adapted from Zimet's Social Support Scale

Youth Social Support



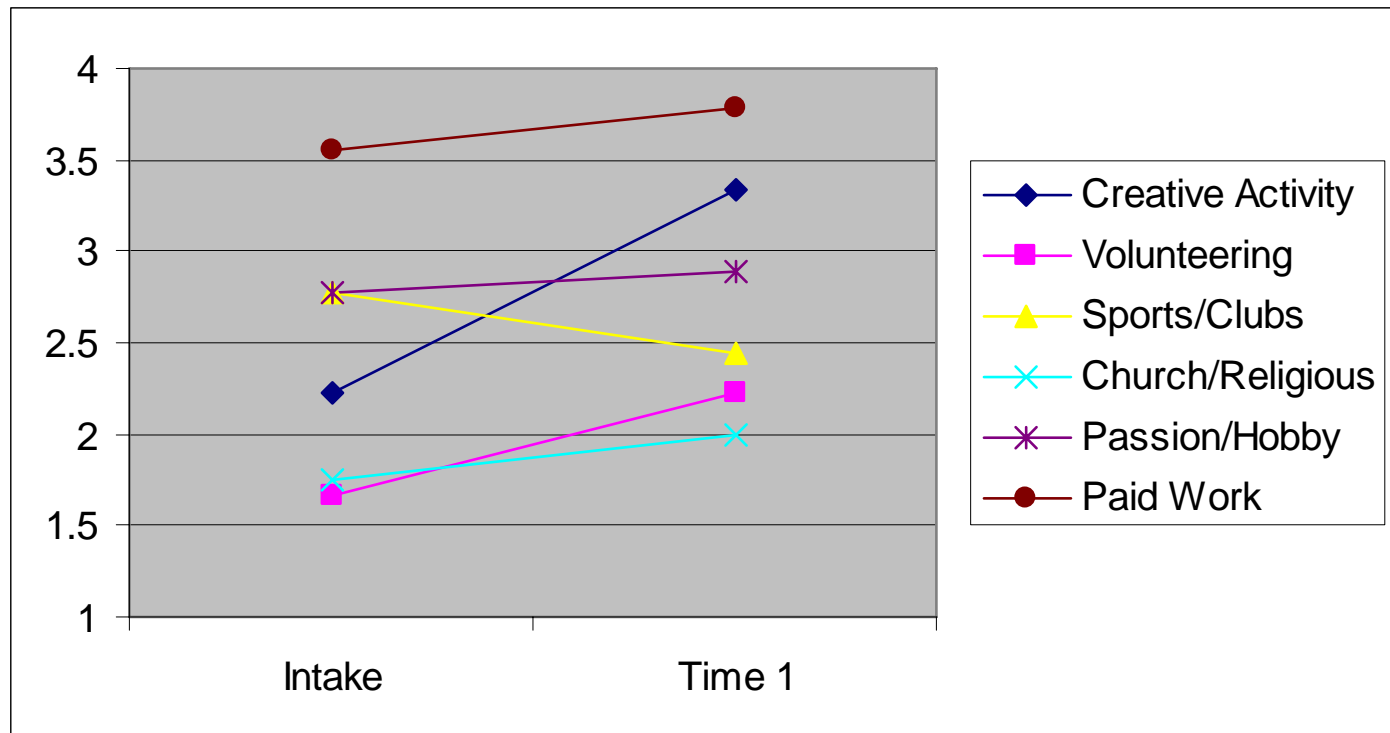
Intake mean: .74 Year 1 mean: .85

Youth Assets: Intake to Year 1 Comparison



Intake mean = .76 Year 1 mean = .89

Youth Strengths: Activities

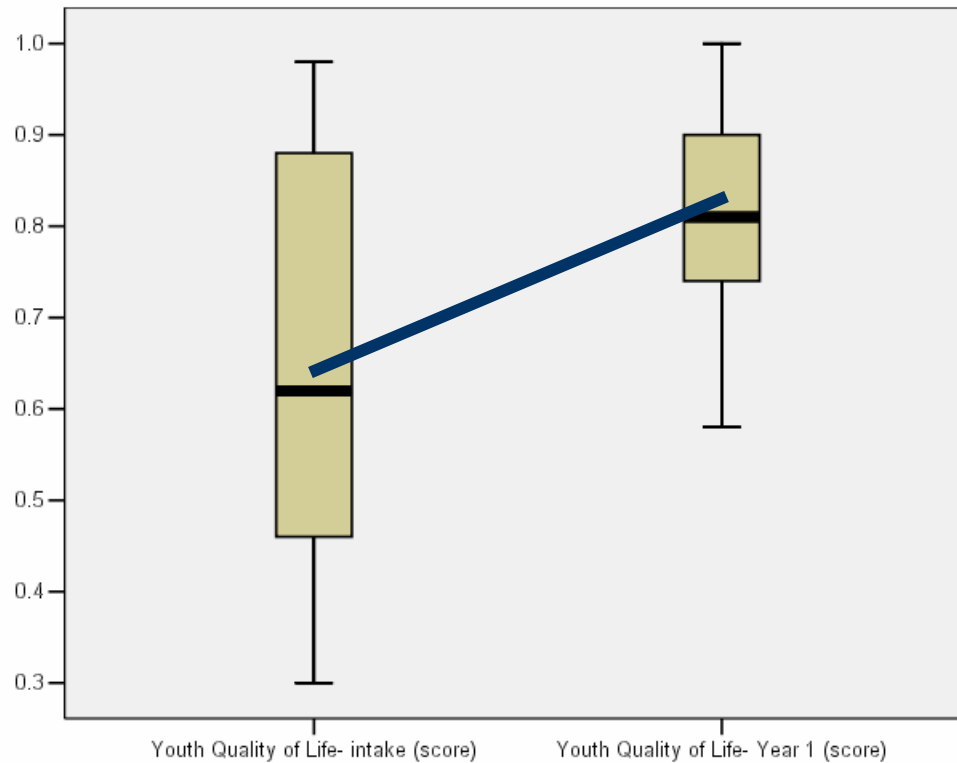


1 = Never 4 = 3 or more hours/week

Youth: Drug and Alcohol Self Report

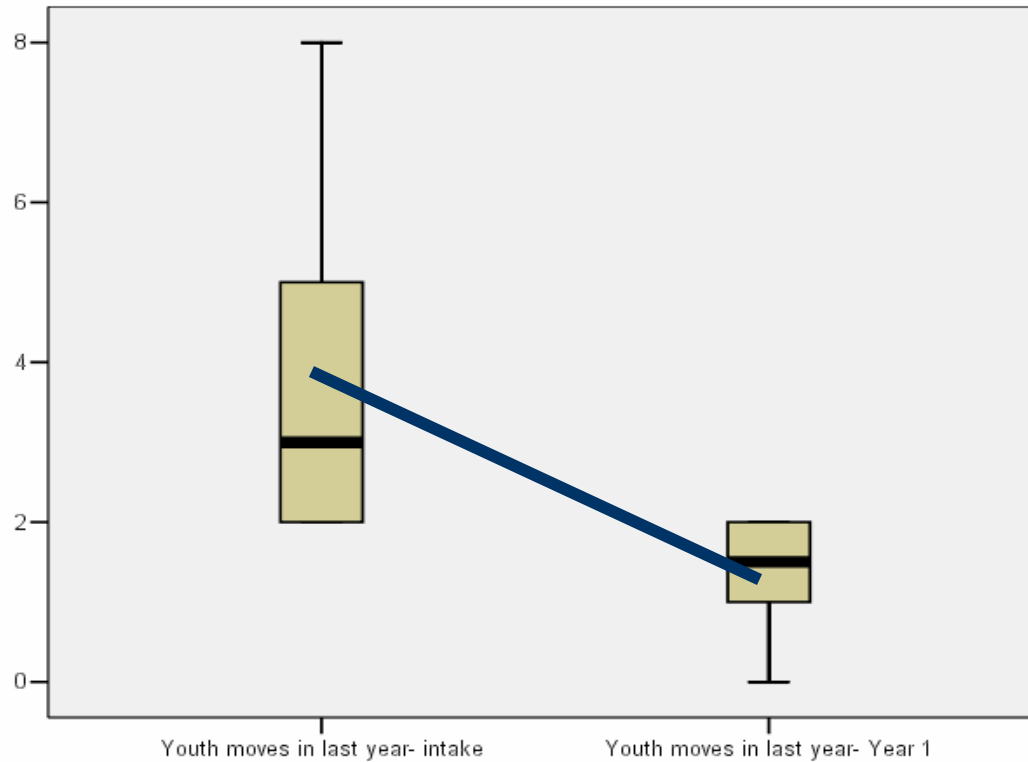
- ◆ Only one youth reported alcohol use at intake, by 1 year, this was up to three, but all reported use in the least frequent category (once per week or less) and said they'd never had more than 4 drinks at once
- ◆ Three youth reported drug use at intake, by 1 year this had decreased to two. All reported infrequent use

Youth Global Quality of Life



Intake mean: .64 Year 1 mean: .81

Youth Moves in Last Year (youth report)



Intake mean: 3.75 Year 1 mean: 1.44

Wraparound Oregon: Logic Model: Service Level



Target Population

- Children/youth ages 6-17
- Medicaid eligible,
- Score of 4, 5, or 6 on CASII
- In or at risk of being in psychiatric residential or day treatment, or detention
- Involved in 3 systems
- Has diagnosis and disability that has lasted at least one year



Philosophy and values

- Family and community are best place for child/youth to live
- All children/youth can live at home with appropriate supports
- All families can participate in their child's life regardless of disability or situation.
- Youth/family are best experts on needs and preferences.
- Youth/family preferences are prioritized in decision making.
- Youth/family must be given a choice of services & providers
- Youth/family must have access to effective interventions
- Services/supports should be culturally competent and strengths based



Service Delivery: Wraparound

- Individualized, comprehensive, team-based planning
 - + Implemented for each child/family by care coordinator/family advocate pair
 - + Single plan incorporates IEP and guides and coordinates all systems' work with families
- Practice model is clearly defined, and training and ongoing coaching ensures high fidelity practice that reflects wraparound principles, e.g.:
 - + meeting needs as defined by family and team and as measured by indicators chosen by the family and team
 - + maximizing family and youth perspective, participation, and choice
 - + using a strengths-based, asset-building orientation
 - + promoting community integration (e.g. through using community-based services, enhancing family and youth connections to community, and building on community and informal assets and supports)



Intermediate outcomes

- High quality/ high fidelity wraparound
- Youth & families are involved, engaged, and satisfied
- Youth & families perceive that care is coordinated
- Each child/ youth and his or her family has a single, individualized plan that coordinates services and supports
- Services & supports identified in plan are provided



Long-term outcomes

- Improved child/youth functioning
 - + increased developmental assets
 - + improved mental health outcomes
 - + improved educational outcomes
 - + reduced involvement with juvenile justice
- Youth and family build and/or maintain connections to family/extended family and community
- Youth and family's needs met, team goals/mission achieved, QoL increases
- Families and youth transition out of intensive services feeling empowered, hopeful, and capable of drawing on internal and community capacities and resources
- Youth living safely and permanently in least restrictive/ community settings.