

Family Participation in Service and Educational Planning: A Brief Measure

Barbara Friesen
Michael Pullmann

Research and Training Center on Family Support and
Children's Mental Health
Portland State University

(503) 725-4040
www.rtc.pdx.edu



Project History & Purpose



1994: Response to federal priority: Focus on residential treatment

Purpose: To learn about the experiences of families whose children were in residential treatment, with particular focus on their participation in planning & decision-making.



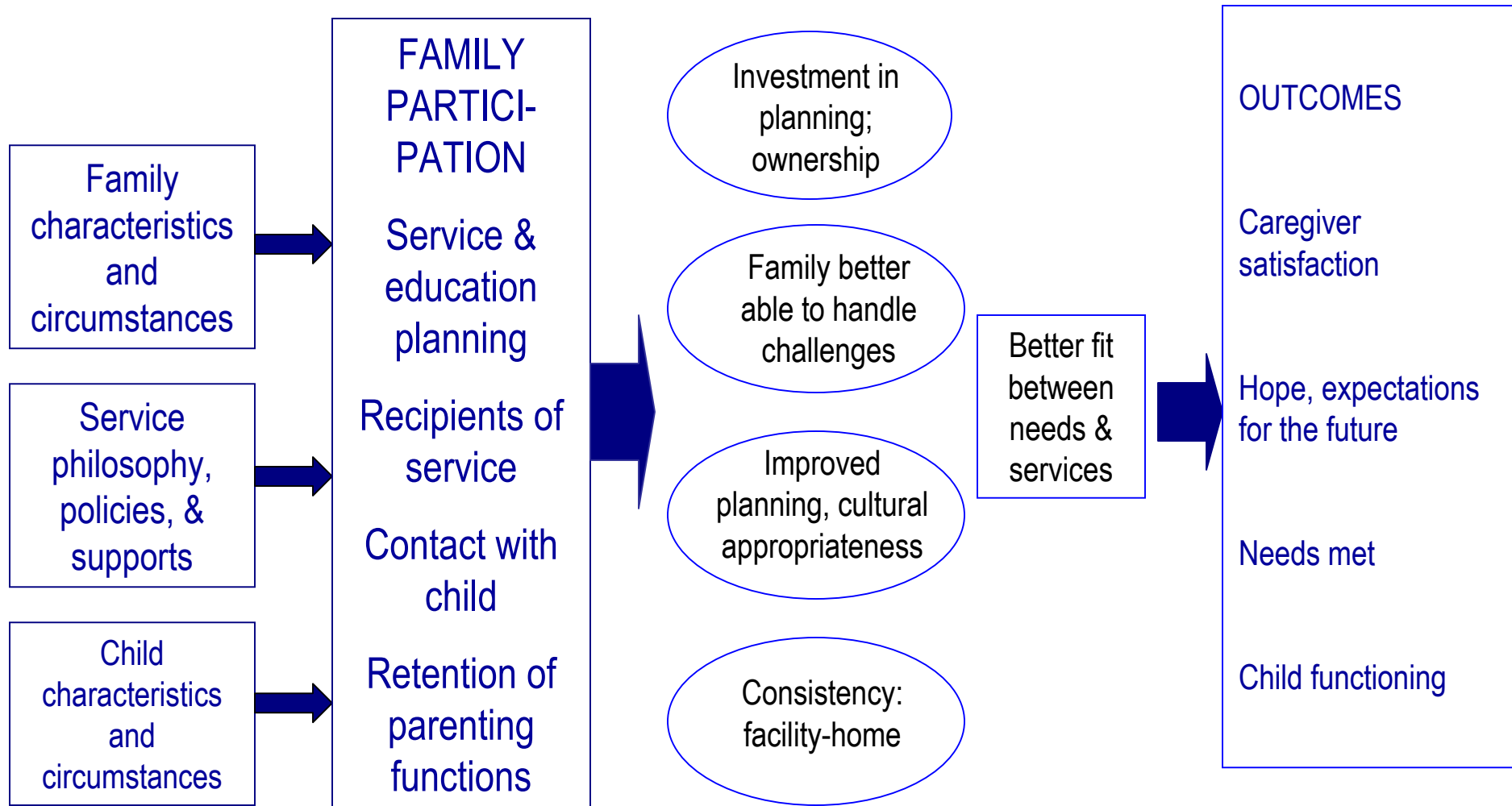
Project History & Purpose



- 1995-96: Focus groups with family members, residential providers, and youth.
- 1996-98: Questionnaire development (focus group findings and family consultants).
- 1998: Focus enlarged to include participation while child is living at home and receiving services.



Family Participation Conceptual Framework



Limitations of Previous Research

- Existing measures:
 - Often operationalize caregiver participation as contacts/visits with child, caregiver receipt of services, or retention of parenting functions.
 - Tend to define caregiver decision-making and planning (when included) as professional-active.
 - Are often drawn from case records or clinical staff respondents, making them difficult to acquire.
 - Are often too lengthy.



About the Study

- Cross-sectional study (one point in time)
- "Convenience" sample (family organizations)
- Randomly selected within 5 regions
- Self-report (family caregivers as respondents)



Methods

- 1999: Collected data from nearly 500 families through a 2-step process:
 - Willingness forms distributed through family organizations
 - Questionnaires mailed to willing families
 - Incentives for return (publications)
 - 61% return; 56% usable



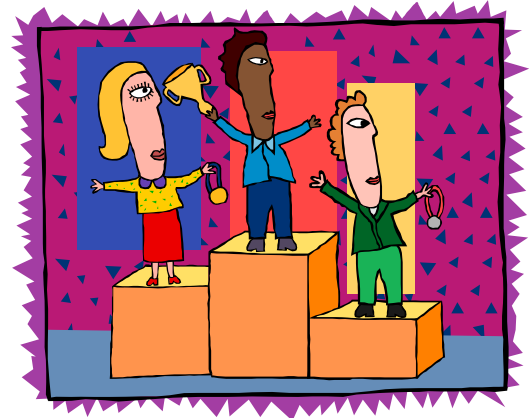
Demographics

- 489 usable questionnaires returned from 46 states
- Caregiver demographics:
 - 75% birthmothers, 12% adoptive mothers
 - Median income \$40,000/year
 - 50% of caregivers had college degree



Youth Demographics

- 364 male, 124 female children
- Youths aged 3 to 23 years, mean of 14
 - 82% white,
 - 6% African American,
 - 6% multiracial,
 - 3% Hispanic,
 - 1% Native American,
 - 1% Asian



| | Factor | | |
|--|---------------|-----------|------------|
| | I | II | III |
| Treatment and Service Planning and Review | | | |
| Included in planning | .801 | | |
| Ideas valued in planning | .848 | | |
| Family's values and culture taken into account | .783 | | |
| Role for you in carrying out plan | .748 | | |
| Plan fit child's needs | .788 | | |
| Agreement with the plan | .829 | | |
| Family's needs/circumstances taken into account | .840 | | |
| Able to influence planning | .874 | | |
| Involved in review of planning | .773 | | |
| Feel free to ask questions in review | .716 | | |
| Staff listened to ideas in review | .810 | | |
| Staff made changes based on ideas in review | .783 | | |

| | Factor | | |
|---|---------------|-----------|------------|
| | I | II | III |
| Education Planning and Review | | | |
| Included in planning | | .586 | .534 |
| Ideas valued in planning | | .786 | |
| Family's values and culture taken into account | | .686 | |
| Role for you in carrying out plan | | .602 | |
| Plan fit child's needs | | .839 | |
| Agreement with the plan | | .864 | |
| Family's needs/circumstances taken into account | | .807 | |
| Able to influence planning | | .767 | |
| Involved in review of planning | | | .760 |
| Feel free to ask questions in review | | | .705 |
| Staff listened to ideas in review | | .695 | |
| Staff made changes based on ideas in review | | .660 | |

Parallel Measures

- Two measures were retained:
 - 1. Service and treatment planning
 - 2. Educational planning
- Measures have parallel items, except for wording specific to the type of planning (i.e. "education" vs. "service")



Final Items Retained



- To what extent:
- Were you able to influence planning for this treatment or service?
- Were your family's values and culture taken into account when planning for your child?
- Were your ideas valued in planning this service for your child?
- Did you agree with the service planning for your child?
- Were the needs/circumstances of your family considered in this planning?
- How much did staff listen to your ideas about ways to change or improve treatment or service planning?
- How much did staff make changes in the service plan for your child as a result of your suggestions?

Reliability

- Cronbach alpha coefficients ranged from .92 to .96 for education and service versions and in and out of home groups
- Service planning version correlated with education planning version $r=.549$, $p<.001$



In-home x Out-of-home Scores t-test

| Living status | Service participation mean | Education participation mean |
|--------------------|----------------------------|------------------------------|
| <i>In-home</i> | 3.06 | 2.85 |
| <i>Out-of-home</i> | 2.82 | 2.72 |
| <i>t</i> | 2.41* p=.016 | 1.33 |

Participation and Demographics

- Service participation related to marital status ($t=2.75$, $p=.035$) with married participants scoring higher ($M=3.1$) than singles ($M=2.8$).
- Family income slightly correlated with service participation ($r=.133$, $p=.005$).
- Age of child's first services slightly correlated with service participation ($r=-.108$, $p=.022$).



Construct Validity

- t-test comparisons with other items in the survey packet demonstrated that scores on caregiver involvement in decisions about their child's daily life were related to higher scores on education and treatment planning.



Additions to the Field

- Existing measures:
 - ✓ Participation often operationalized as contact/visits with child, receipt of services
 - ✓ When planning services is included, it is professional-active
- Family Participation Measure:
 - ✓ Participation has several aspects, one of which is planning services and education
 - ✓ Operationalized as caregiver-active



Additions to the Field

- Existing measures:
 - ✓ Often drawn from case records or clinical staff respondent
- Family Participation Measure:
 - ✓ Caregiver respondent



Additions to the Field

- Existing measures:
 - ✓ Often too lengthy or difficult to acquire (i.e. case records, telephone records)
- Family Participation Measure:
 - ✓ Brief (7 or 14 items), easy to administer, paper and pencil

