

# Financing to Support Family and Youth Partnerships

**Ginny Wood, B.S.**

**Mary Armstrong, Ph.D.**

Presented at the Building on  
Family Strengths Conference

Portland, Oregon

May 31st-June 2nd, 2007

# Introduction: Financing Strategies and Structures to Support Effective Systems of Care

---

## **This 5 year study aims to:**

- Identify a set of critical financing structures and strategies to support effective systems of care.
- Investigate and describe how these factors operate separately, collectively, and in the context of their community to create effective financing policies for systems of care.

# Critical Financing Areas

---

- Identification of current spending and utilization patterns across agencies
- Realignment of funding streams and structures
- Financing of appropriate services and supports
- Financing to support family and youth partnerships
- Financing to improve cultural/linguistic competence and reduce disparities in care
- Financing to improve the workforce and provider networks for behavioral health services for children and families

# Sample Financing Strategies

---

- Financing mechanisms that utilize diverse funding streams from across the major child-serving systems
- Financing strategies to redirect service dollars from deep-end restrictive placements to home and community-based services and supports
- Financing mechanisms to support services to uninsured and underinsured children
- Policies and mechanisms to ensure effective and appropriate financing strategies for tribal system of care
- Financing mechanisms that support family/youth involvement in policy making and system management

# Methods

---

## ***Participatory Action Research***

The team utilizes a panel of national financing experts, including family members who are leaders of statewide family organizations, to provide ongoing feedback and input to the study.

## ***The Multiple Case Study Design***

The financing implementation processes at the selected sites constitute the embedded units of analysis. Each selected site is the subject of an individual case study, and a set of critical financing components serve as the embedded units of study within each site.

# Site Visits

---

- Last year the team begun site visits. The panel of experts nominated potential sites for the study .
- Five sites were visited and telephone interviews were conducted with three others.
- All selected sites have demonstrated commitment to system of care values and principles .
- The site visits involved document reviews and key informant interviews.

# Site Visits

---

- The study team developed a semi-structured interview protocol that was reviewed and modified with the help of the expert panel.

The protocol questions and probes relate to the critical financing components identified by the study, as well as current challenges, priorities, and system expectations.

- The team has compiled site visit reports that are under review by the sites.
- A second round of site visits is planned for the coming year.

# Site Selection

---

■ Sites visited or interviewed were

- **Maricopa County, Arizona**
- **Vermont**
- **Bethel, Alaska**
- **Hawaii**
- **Central Nebraska**
- **DAWN Project**
- **New Jersey**
- **Wraparound, Milwaukee**

# Products

- *A Self-Assessment and Planning Guide: Developing a Comprehensive Financing Plan* for use by state and community policymakers and planners
- Final stages of completing a conglomerated report from the site visits titled: *Effective Financing Strategies for Systems of Care*
- In the near future there will be Financing TA briefs with “how-to” information and examples from the site visits
- All study materials will be disseminated through mailings and the Center’s website throughout the 5-year period of the study

# Anticipated Study Findings

---

- A theory of change and set of critical financing structures and strategies was developed during the first year of the study. These will be revised and finalized as a result of the site visit findings.
- The expected outcome is heightened attention to and knowledge about critical financing strategies on the part of key stakeholders involved in building systems of care.

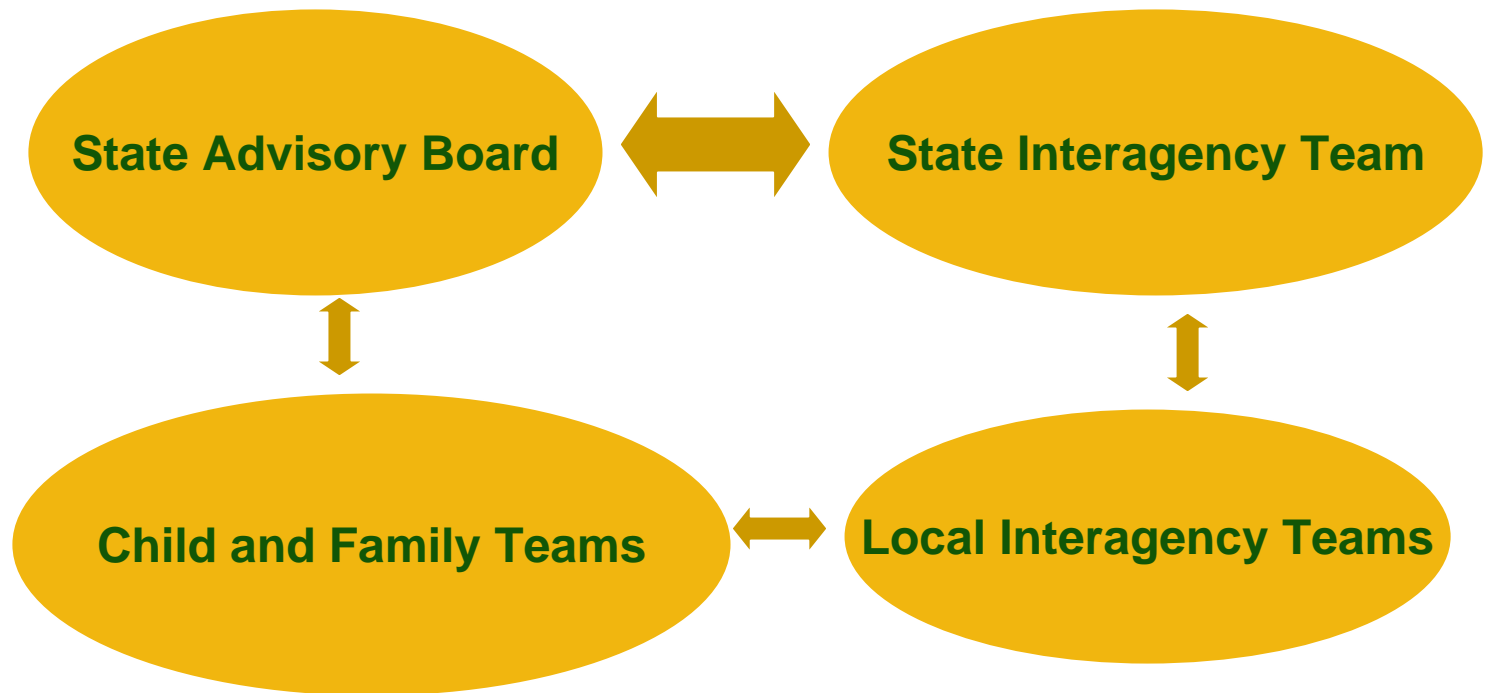
# Financing to Support Family and Youth Voice

- Family and youth partnership in service planning
- Family and youth peer advocates
- Choice of services and/or providers
- Training of providers in how to partner with families and youth
- Payments and supports for family and youth participation at the policy level
- Training and leadership development for families and youth
- Services and support for families/caregivers
- Family organizations as service providers
- Support for development and growth of family and youth organizations

# Vermont

State legislation (Act 264) mandates financing for family participation at all levels.

---



Financed by State general revenue (mental health), federal discretionary grants and foundation grants

# Vermont

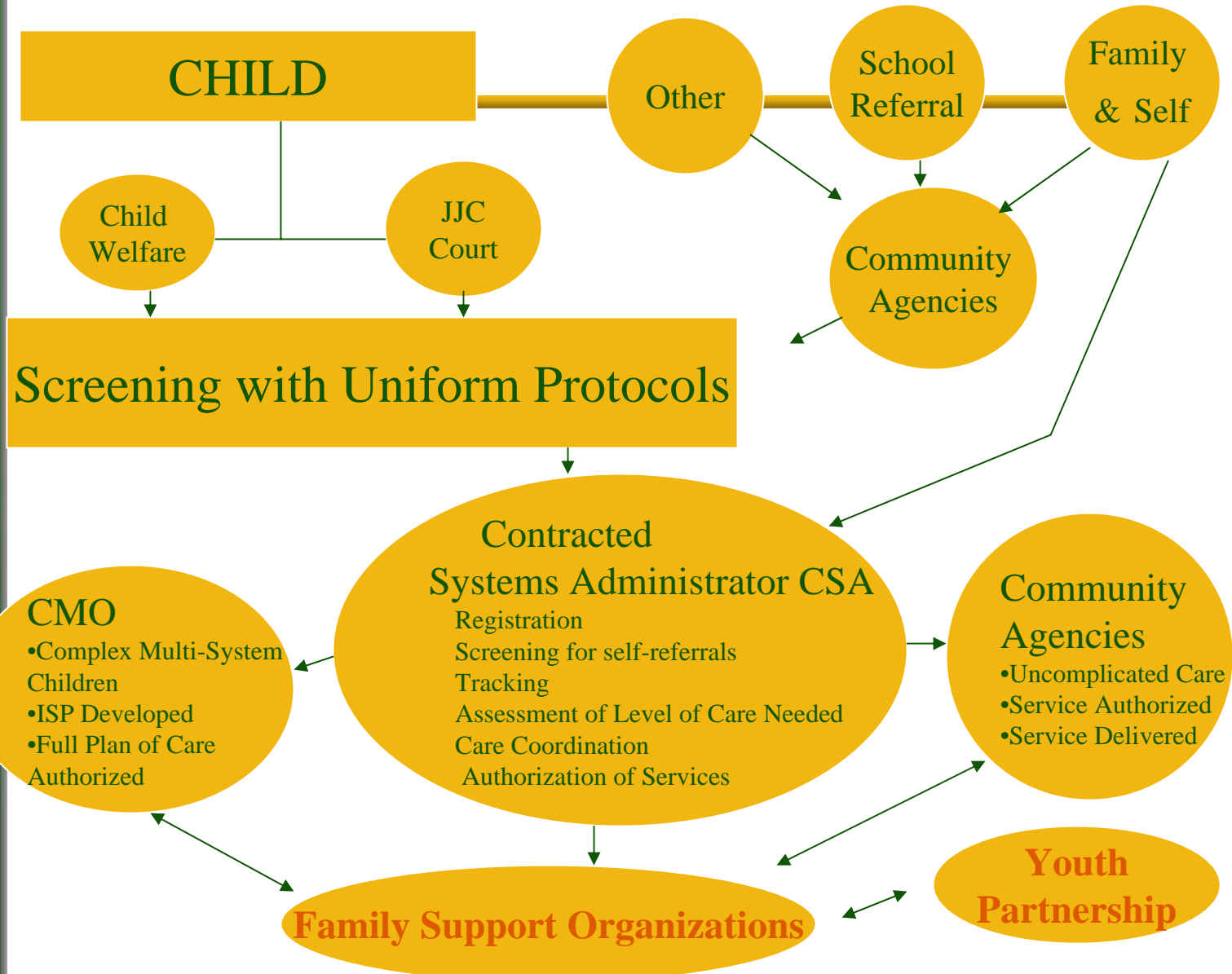
Vermont Federation  
Of Families



\$90,000/year  
(w/inflation  
adjustments)

- 
- Support participation on state and local interagency teams
  - Leadership development and training
  - Family advocacy
  
  - Financed by state general revenue and federal discretionary SAMHSA grants
  
  - Also, Peer Navigators – supported by federal ACF grant

# New Jersey System of Care Initiative



# New Jersey Family/Youth Voice

---

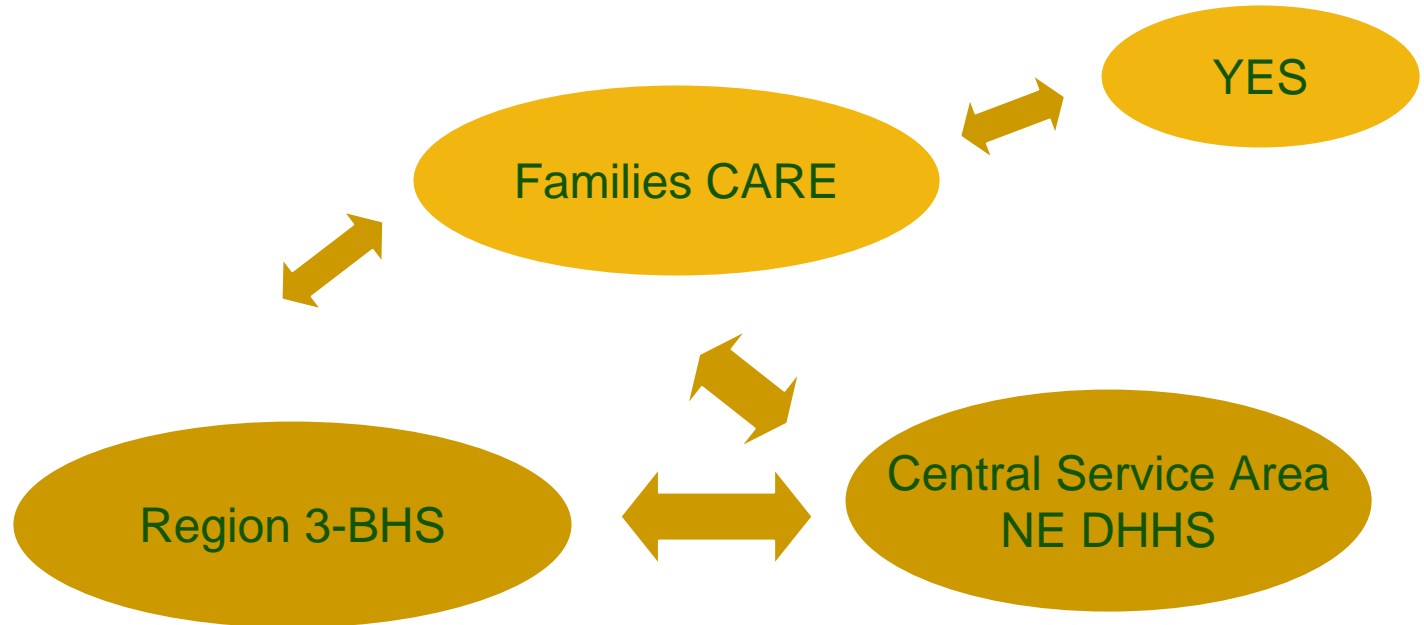
Financed by:

- State general revenue (mental health and child welfare)
- Medicaid (administrative case management)
- Federal discretionary grants

# Central Nebraska (22 Counties in Region 3)

---

## Integrated Care Coordination Initiative



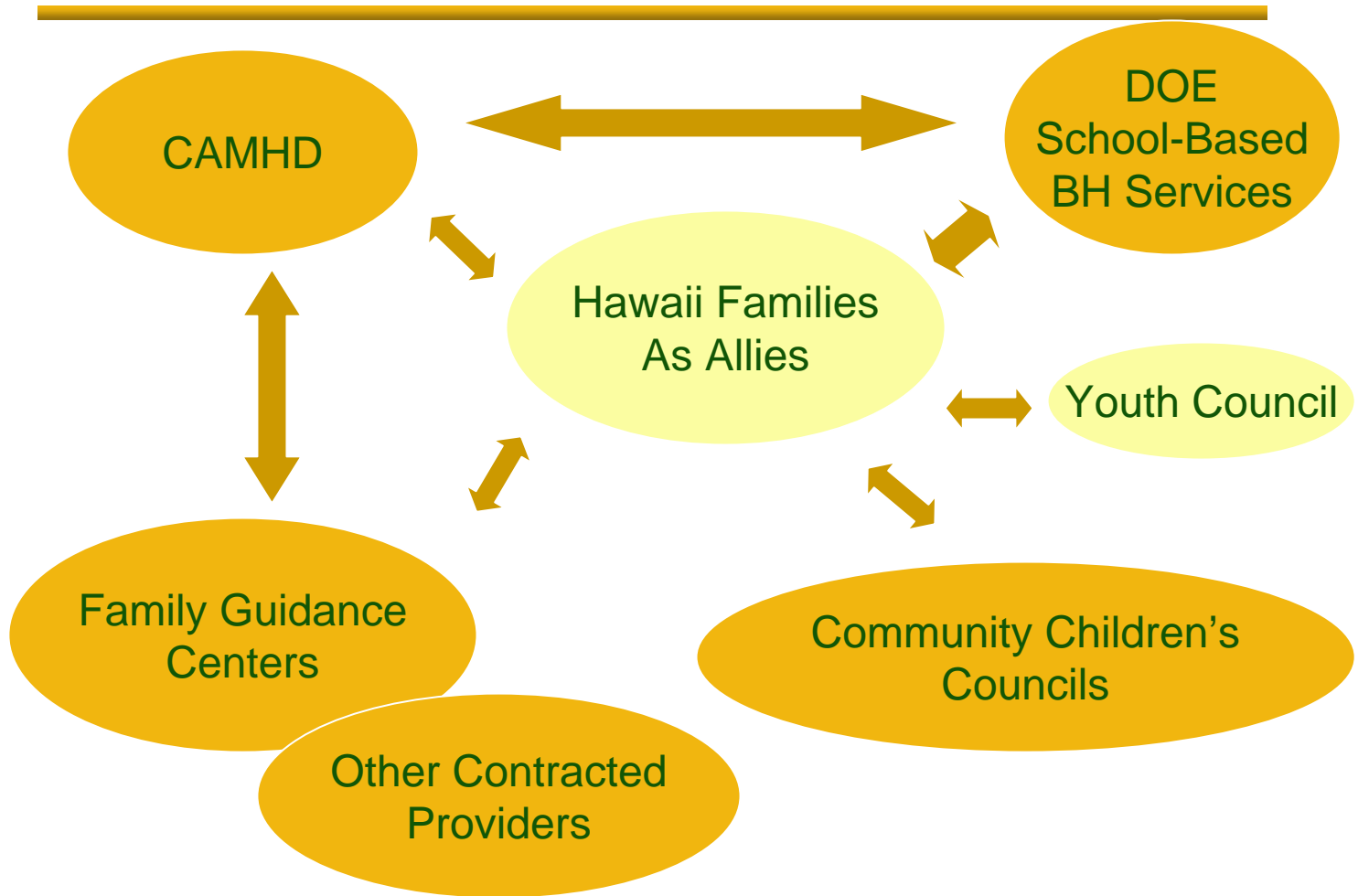
# Families CARE Functions

- Parent Partners
- Child Care
- Food
- Transportation
- Family Education and Support
- Youth Peer Support

\$472,000

Financed initially by federal discretionary grant; now financed through blended case rate comprised of MH and child welfare dollars; 8% of case rate goes to Families CARE (e.g., “reinvestment dollars”)

# Hawaii System of Care



# Hawaii Families as Allies

## Contract - \$600,000

---

- Policy and system management involvement
- Develop a “program on a broad range of topics...to enhance attitudes, skills and knowledge of youth and families”
- Training on broad range of topics
- Information dissemination (e.g., website)
- Newsletter
- Workshops and at least one annual conference
- Organize and support a Youth Council
- Operate a statewide phone line for information and help to families
- Employ Consumer/Family Relations Specialists to be available via phone line to assist families

# Hawaii Families as Allies

## Contract - \$600,000

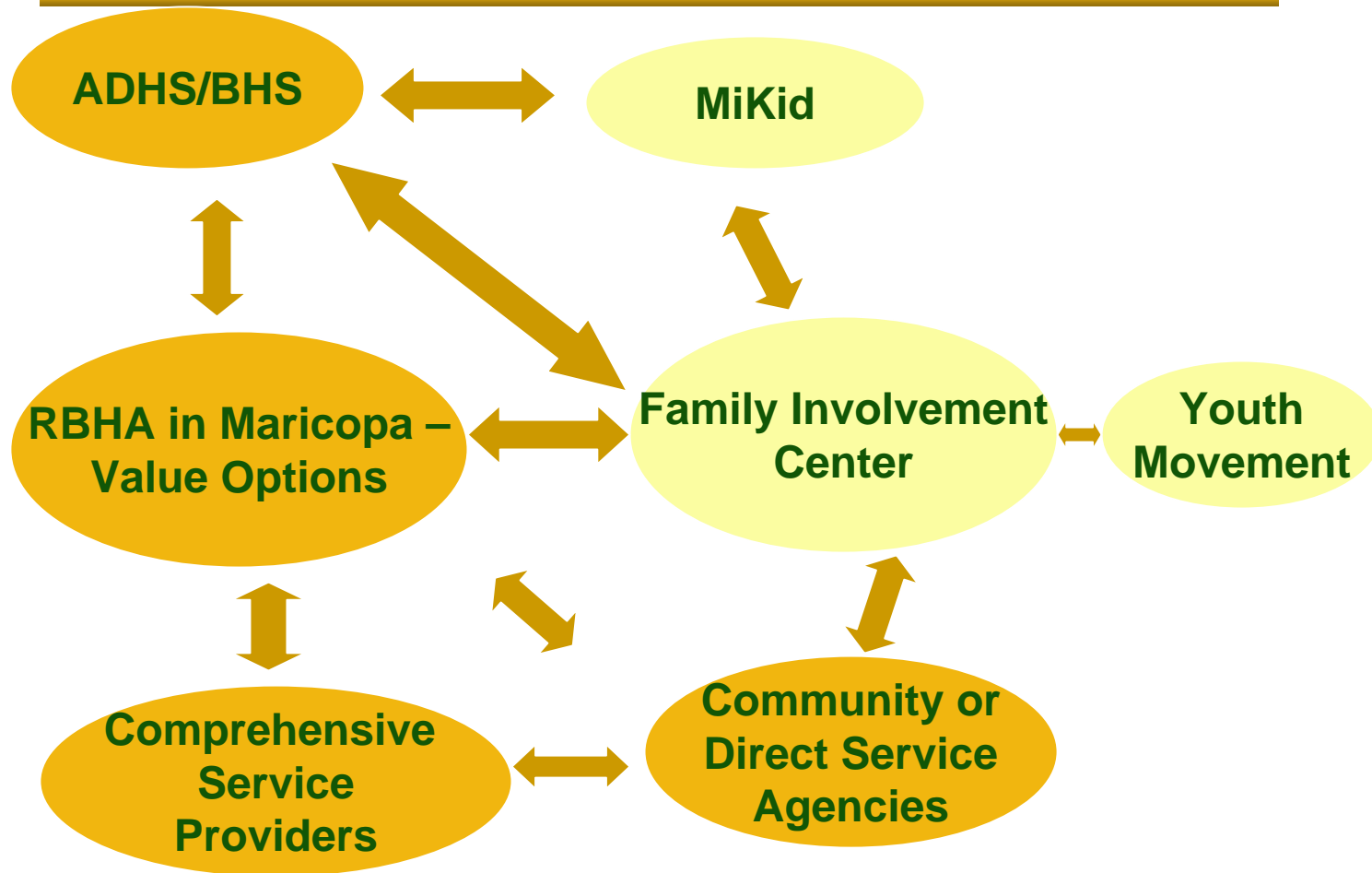
---

- Develop and maintain two resource manuals – one on community resources and one on recreational, leisure and educational resources
- Peer support through recruitment, training and supervision of Parent Partners (stationed at Family Guidance Centers) - CAMHD contracts with providers require submission of youth and family engagement policies at all levels
- Social marketing to reduce stigma



Financed by State general revenue (mental health), Federal MH block grant, and federal discretionary grant

# Arizona System of Care & Maricopa County



**USF**

UNIVERSITY OF  
SOUTH FLORIDA

# Family Involvement Center Contracts

---

- Contract with ADHS/BHS (State MH)
- Value Options “administrative functions” contract
- Value Options contract as provider in network
- Contract with State child welfare agency

Financed initially by State legislative appropriation; now financed by State general revenue (MH), tobacco settlement, federal MH block grant, federal discretionary grant, Medicaid billable services, and child welfare (GR and IV-E waiver)

# Family Involvement Center Functions

---

## State MH Contract

- Policy and system management involvement
- Payment of stipends to support family partnership at policy/system level, also transportation, child care
- Training of providers, families, etc.
- Development of a Latino family organization (in partnership with MiKid)
- Build family and youth movement

State MH also paid first year dues for FIC and MiKid to belong to AZ Council of Providers

# Family Involvement Center Functions

---

## Value Options Contract - \$1m.

- Staff and participate on Children's Advisory Council
- Family recruitment and training
- Organizing open education opportunities
- Information and referral
- Co-facilitation of administrative meetings
- Recruitment and training of family mentors (peer mentors)
- Training and technical assistance for providers on family and youth partnership

Value Options also has full-time family members on staff.

# Family Involvement Center Functions

---

## Service Provider Contract with Value Options

- Peer mentors
- Respite
- Behavioral coaching
- Skills training
- Health promotion
- Family support and education
- Personal aide services

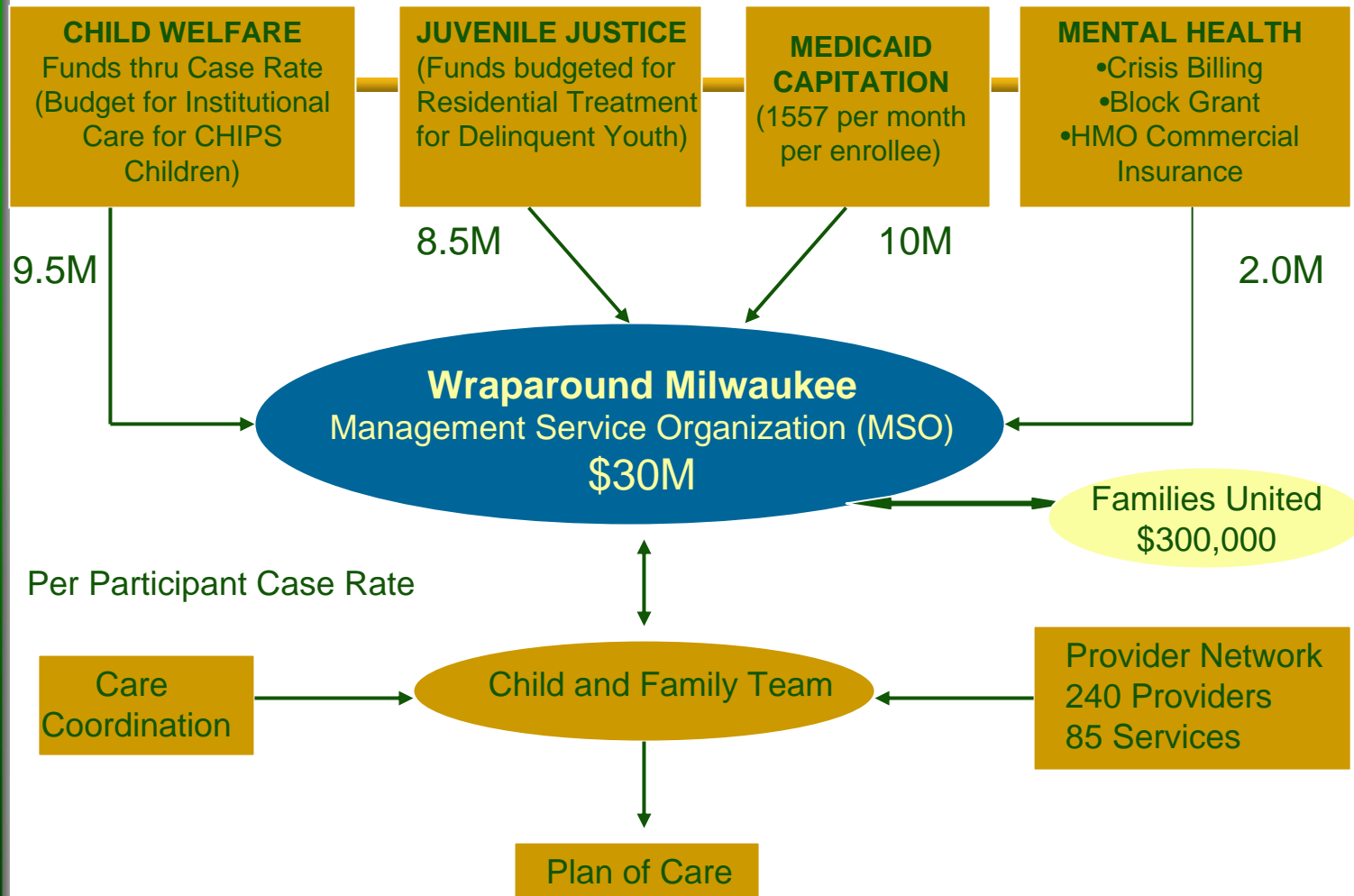
# Family Involvement Center Functions

---

## State child welfare contract

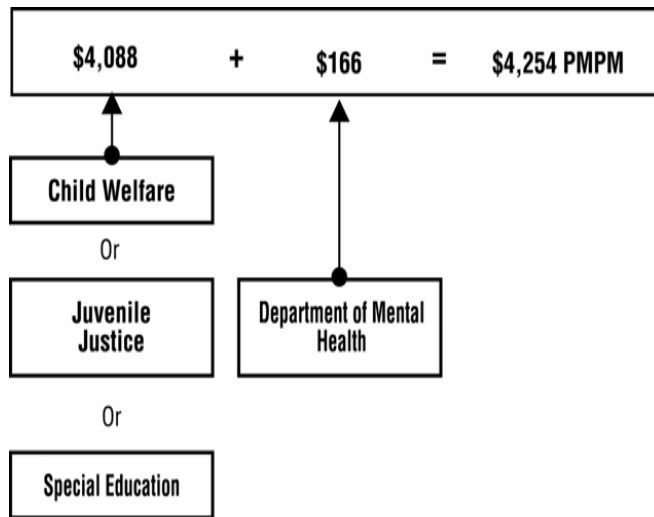
Support for families at risk of child welfare involvement (“Family-to-Family” approach)

# Wraparound Milwaukee

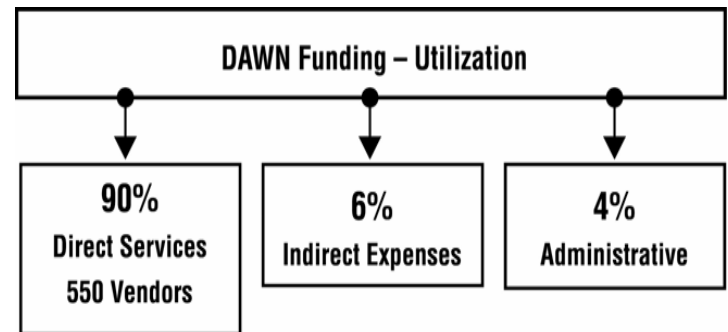


# DAWN Project – Marion County, IN

## How Dawn Project is Funded



## Dawn Project Cost Allocation



Management Entity:  
Non profit behavioral  
health organization  
(Choices, Inc.)

# Rainbows Functions

---

- Employ Family Advocates (Choices reimburses on a FFS basis)
- Operate a hotline
- Run monthly family support groups
- Produce a newsletter
- Conduct training
- Engage in system level advocacy

Choices, Inc. provides office space at minimal rent, technology support, and benefits to Rainbow employees.

# Cross-Cutting Observations

---

- SOC embrace the principle that family and youth voice is a core element of the system
- SOC treat costs associated with building, growing and integrating family and youth voice as a fundamental “cost of doing business”
- SOC draw on financing to support family and youth voice from multiple sources